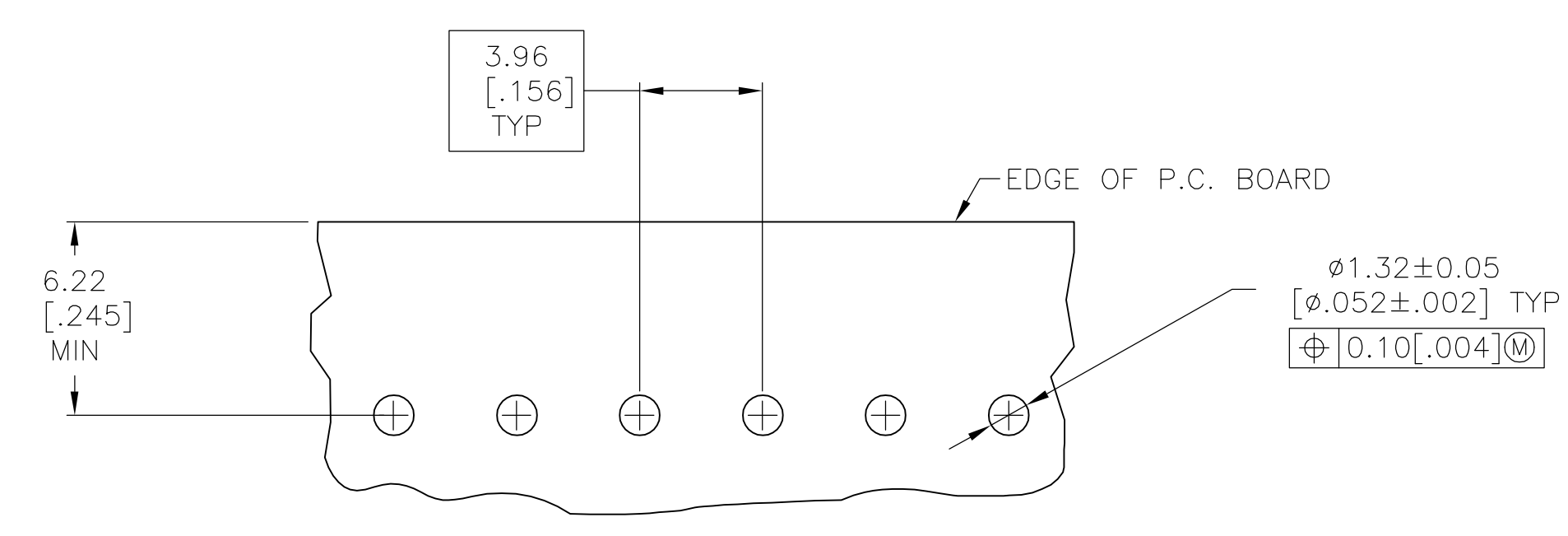
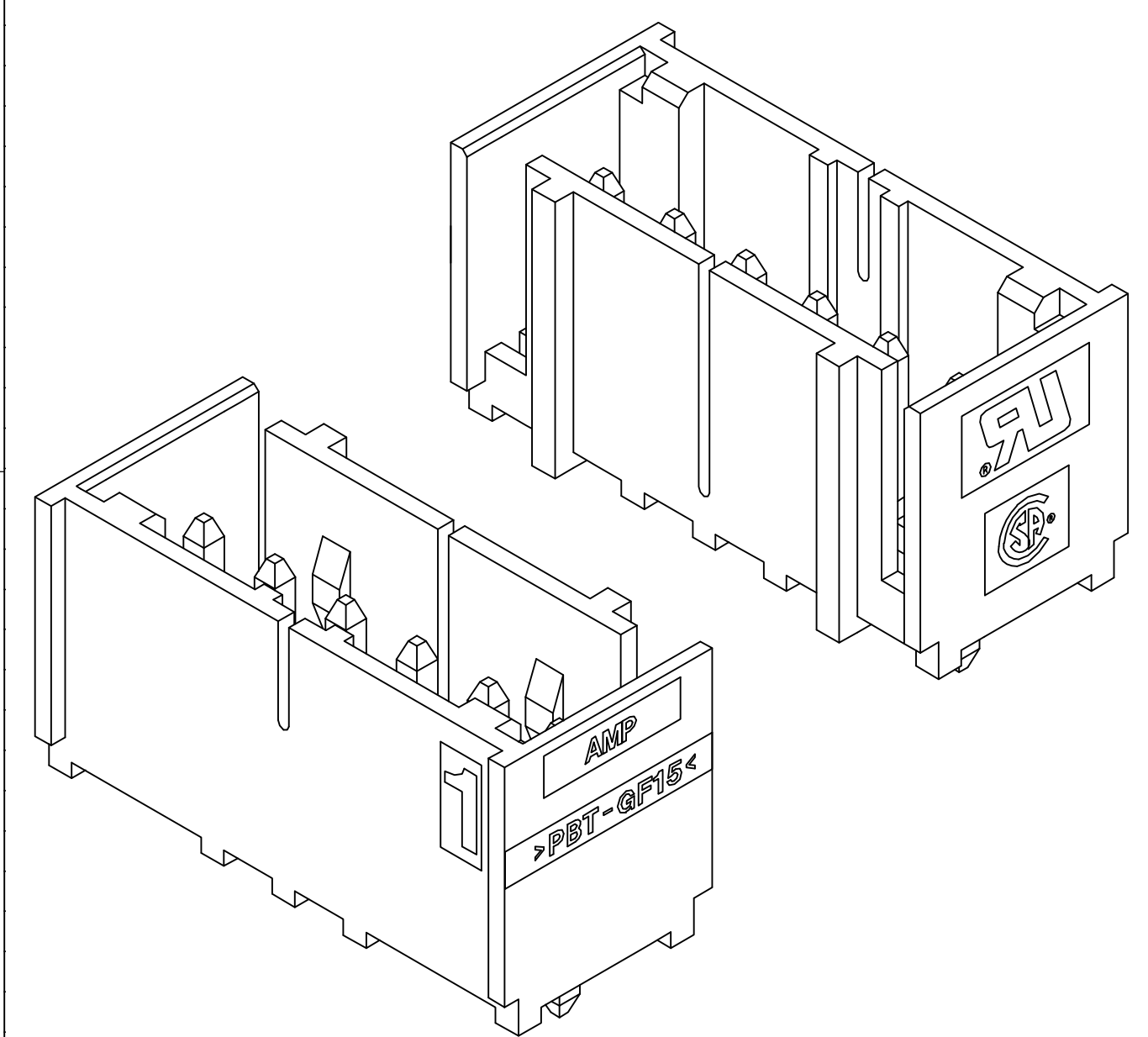
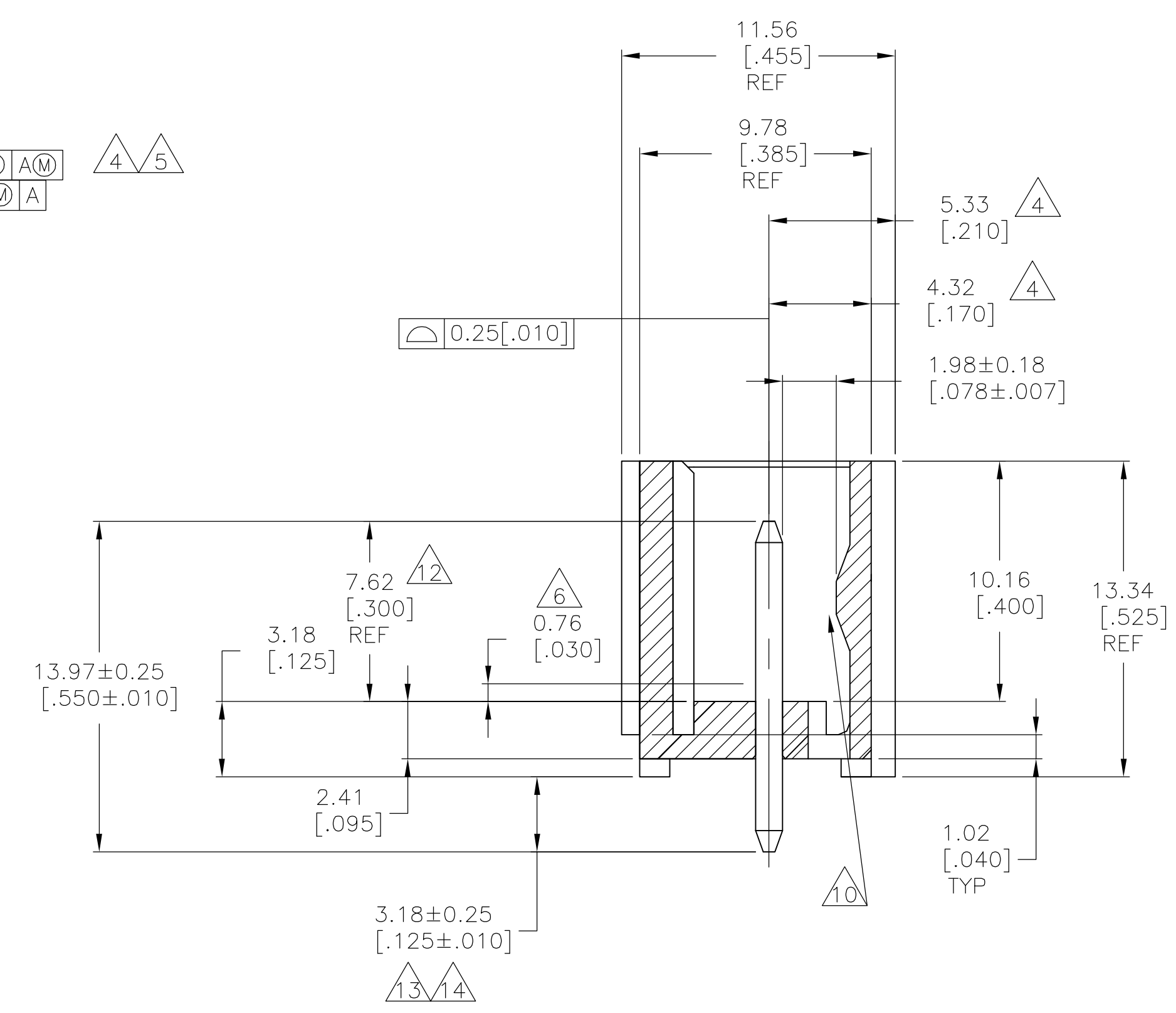
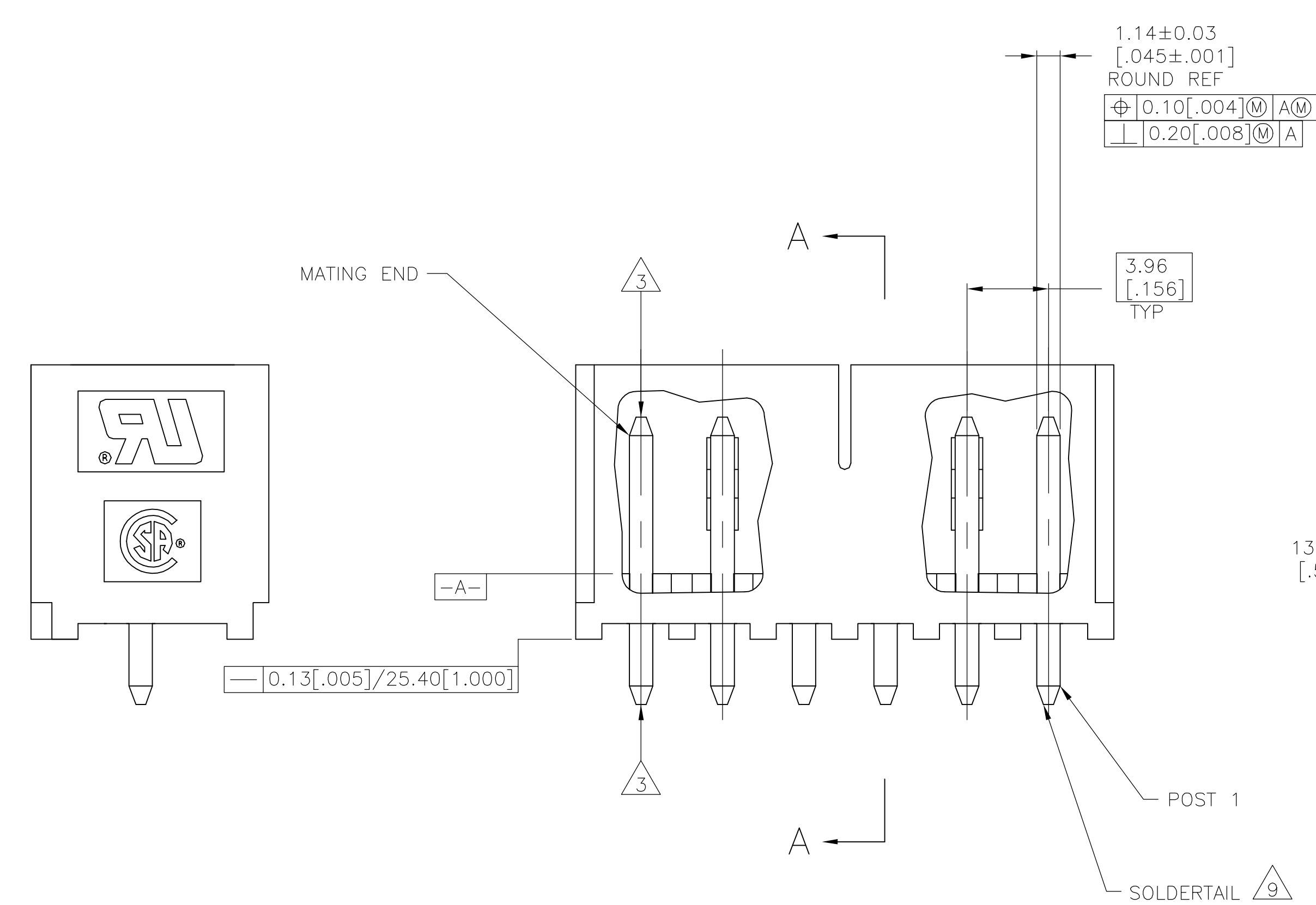


- 1 MATERIAL:  
HOUSING - THERMOPLASTIC POLYESTER, GLASS FILLED, UL94-0.  
POST - COPPER ALLOY.
- 2 FINISH:  
HOUSING - BLACK  
POST - SEE NOTES 12, 13 AND 14 FOR PLATING.
- 3 POST TO WITHSTAND 3LBS (16N) MIN AXIAL FORCE IN THIS DIRECTION WITHOUT DISLODGING.
- 4 APPLIES AT -A-
- 5 APPLIES WHEN HEADER IS STRAIGHT.
- 6 PLASTIC PROJECTIONS PERMITTED IN THIS ZONE.
- 7 COORDINATE DIMENSIONS APPLIES FROM CENTER OF ACTUAL FEATURE.
- 8 SOLDER SIDE OF BOARD IS SHOWN.
- 9 POST SOLDERTAIL MUST COMPLY WITH AMP SOLDERABILITY SPEC 109-11-2.
- 10 LATCH DETENT FEATURE APPEARS 1 PLACE ON EACH END OF PART (MAX OF 2 PER PART) ON ALL POSITIONS 4 THRU 12. THE LATCH APPEARS ONLY ONE PLACE ON 2 & 3 POSITION PARTS.
- 11 DIMENSIONS IN BRACKETS ARE IN INCHES.
- 12 GOLD PLATE AREA, 0.00076 [.000030] MIN : OVER NICKEL UNDERPLATE, 0.00127 [.000050] MIN AND ENTIRE LENGTH OF POST.
- 13 BRIGHT TIN LEAD (93/7) PLATE AREA 0.00381 - 0.0089 [.000150 - .000350] 3.18 [.125] MIN..
- 14 MATTE TIN PLATE AREA 0.00381 - 0.0089 [.000150 - .000350] 3.18 [.125] MIN..



RECOMMENDED MOUNTING HOLE PATTERN FOR 1.57[.062] THICK P.C. BOARD

647132-6 SHOWN

12, 14	49.94	1.966	12	3-647132-2
	45.97	1.810	11	3-647132-1
	42.01	1.654	10	3-647132-0
	38.05	1.498	9	2-647132-9
	34.09	1.342	8	2-647132-8
	30.12	1.186	7	2-647132-7
	26.16	1.030	6	2-647132-6
	22.20	.874	5	2-647132-5
	18.24	.718	4	2-647132-4
	14.27	.562	3	2-647132-3
	10.31	.406	2	2-647132-2
	12, 13	49.94	1.966	12
45.97		1.810	11	1-6471312-1
42.01		1.654	10	1-647132-0
38.05		1.498	9	647132-9
34.09		1.342	8	647132-8
30.12		1.186	7	647132-7
26.16		1.030	6	647132-6
22.20		.874	5	647132-5
18.24		.718	4	647132-4
14.27		.562	3	647132-3
10.31		.406	2	647132-2

PLATING	MM	IN	NO OF POSN	PART NUMBER

THIS DRAWING IS A CONTROLLED DOCUMENT.

DWG	R. LEWIS	7-21-97	Tyco Electronics Corporation Harrisburg, PA 17105-3608
CHK	R. SWING	7-21-97	
APP'D	D. CLARK	7-21-97	NAME: MTA-156 SHROUDED HEADER ASSEMBLY, STRAIGHT .045 ROUND POST, 0.00030 GOLD, W/O RETENTION PEG APPLICATION SPEC:
DIMENSIONS:	TOLERANCES UNLESS OTHERWISE SPECIFIED:		SIZE: A1
mm [INCHES]	0 PLC ± .005	1 PLC ± .005	CAGE CODE: 00779
	2 PLC ± .005	3 PLC ± .005	DRAWING NO: 647132
	4 PLC ± .005	ANGLES ± .005	RESTRICTED TO: -
MATERIAL:		FINISH:	WEIGHT: -
			CUSTOMER DRAWING

SCALE: 5:1 SHEET 1 OF 1 REV E

